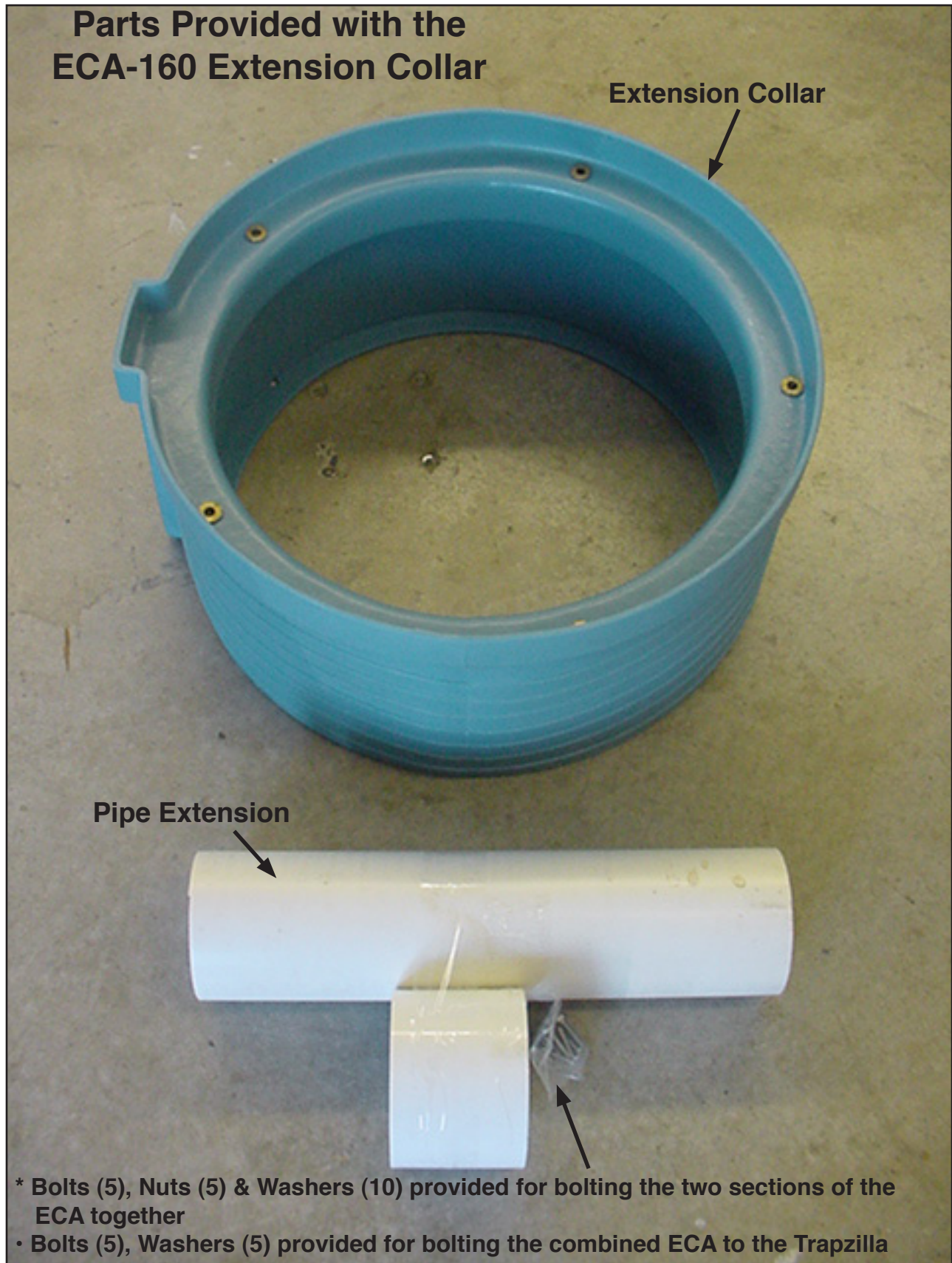
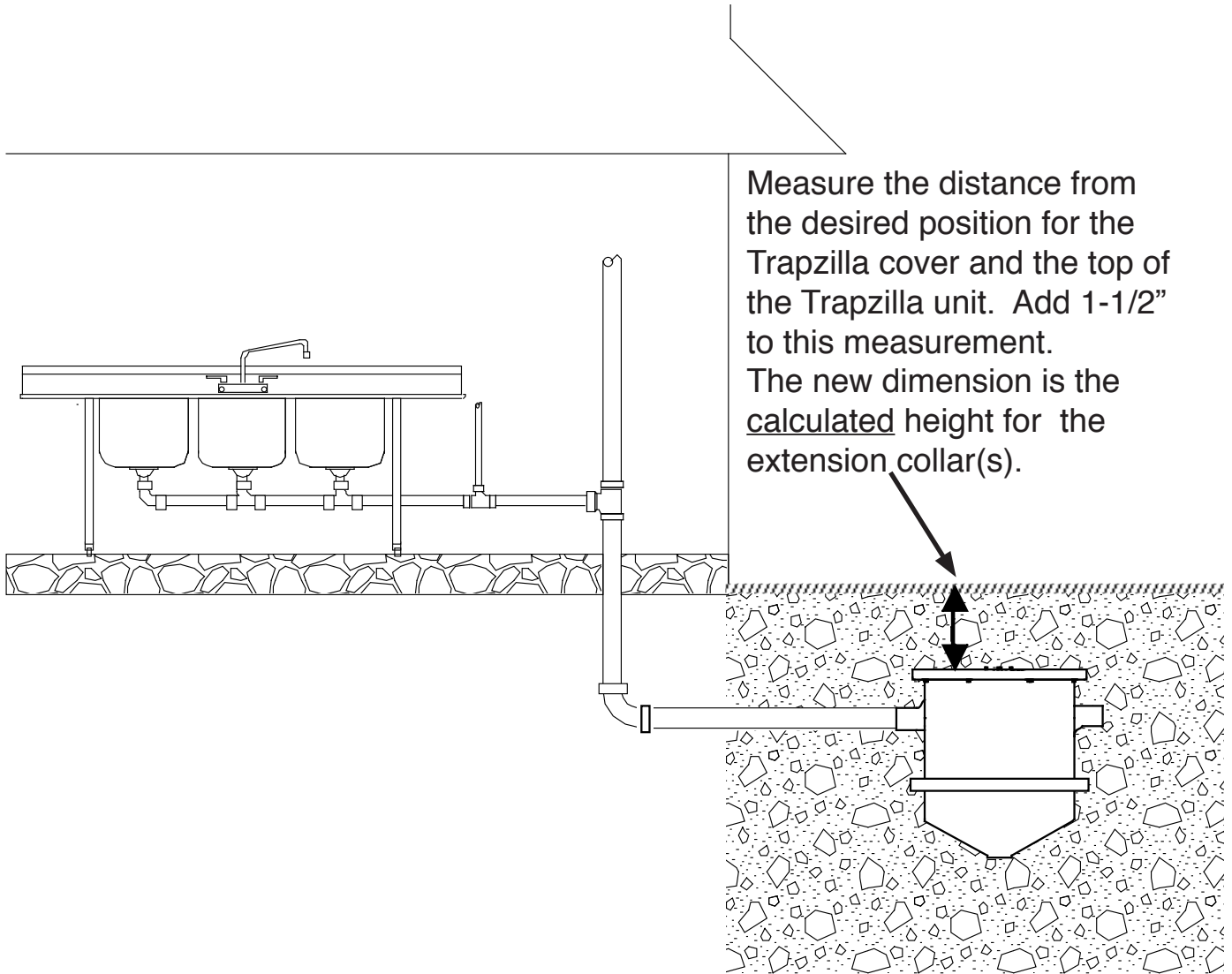


Trapzilla® ECA-160 Extension Collar Installation Instructions

Parts Provided with the ECA-160 Extension Collar

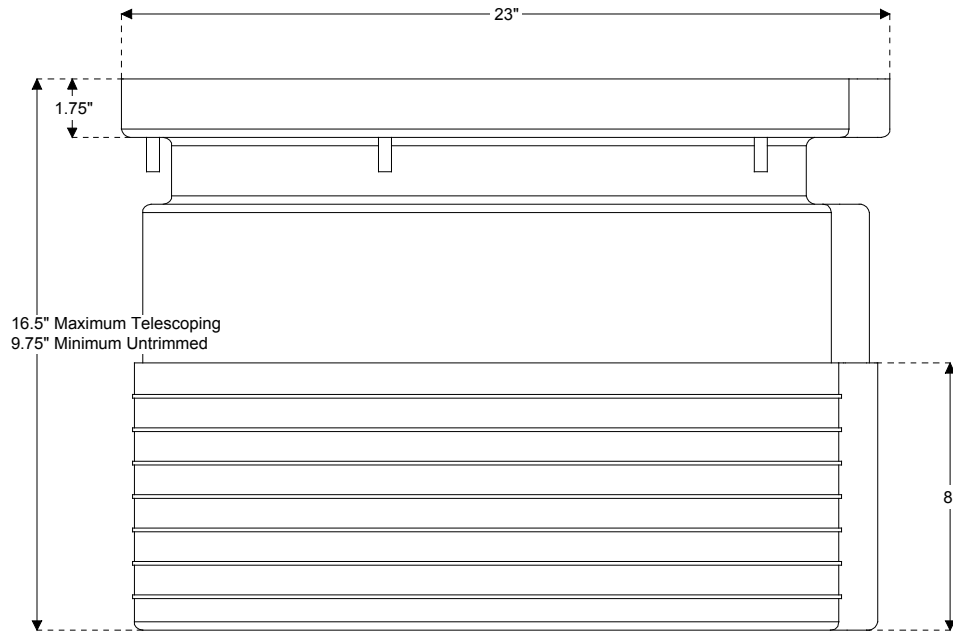


Trapzilla® ECA-160 Extension Collar Installation Instructions



Trapzilla® ECA-160 Extension Collar Installation Instructions

The extension collar height as calculated on page 2 determine the steps required to complete the extension collar installation. The ECA-160 as shipped is adjustable between 9.75” and 16.5” in height. The following page (page 4) gives instructions for connecting the two collar halves. The remaining pages cover height adjustments.



If the calculated height (page 2) is between 9.75” and 16.5” inches please use page 5 of these instructions for setting the collar height.

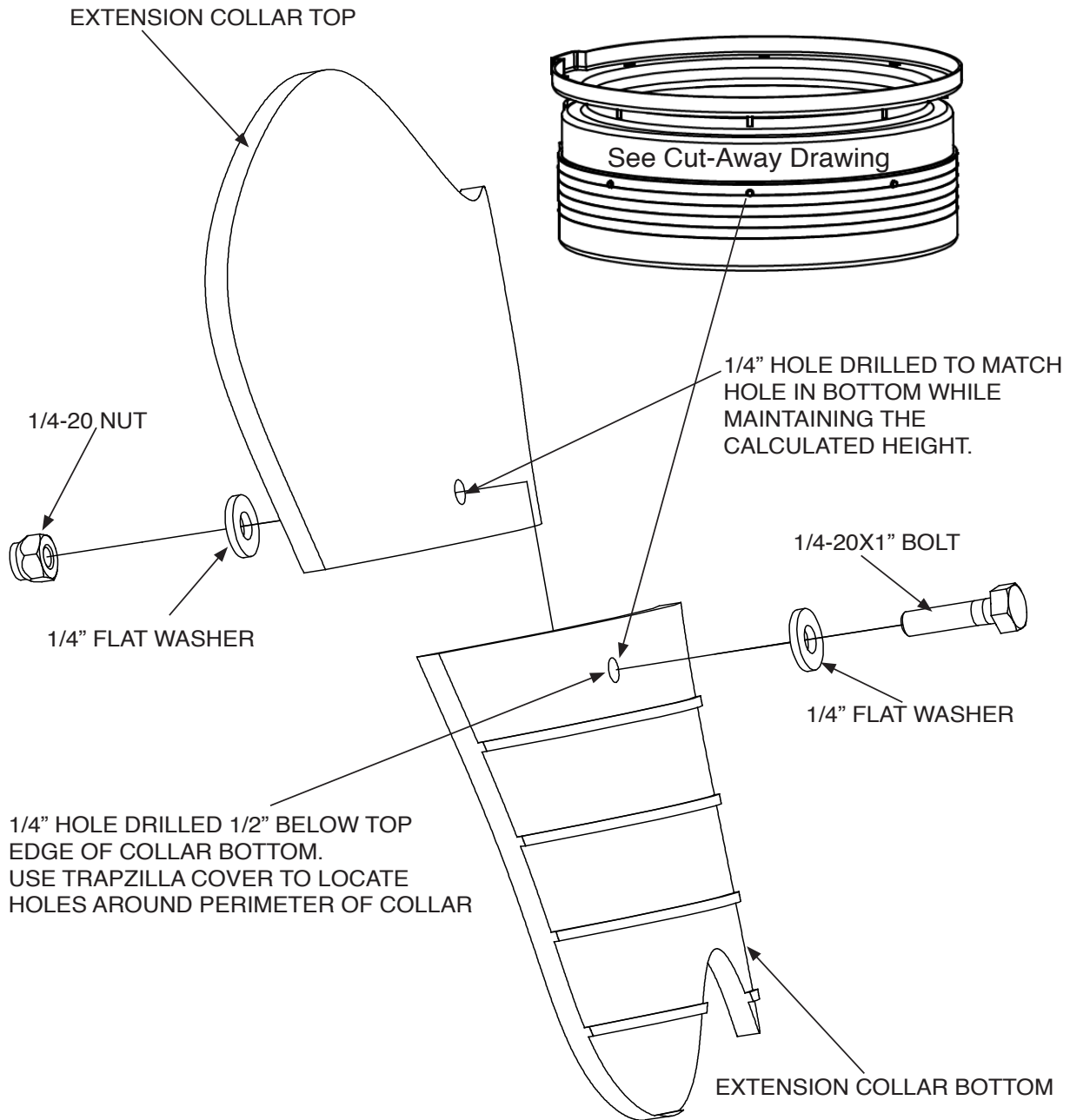
If the calculated height is between 5” and 9.75” then the collar must be trimmed to match the calculated height. The minimum height for this collar assembly is 5”. If the calculated height is less than 5” the finished grade level must be adjusted to match either the original Trapzilla cover position or the position with the 5” extension. Please follow the instructions on page 6 for trimming the collar. After trimming follow the instructions on page 5 for assembly.

If the calculated collar height is greater than 16.5” inches then multiple collars must be used. The multiple collars may be a combination of adjusted (page 5) and/or trimmed collars (page 6). Whenever possible use only the adjusted method for the best installation. Because of the “nesting” aspect of these collars, it is necessary to add 1-1/2” to each additional collar (after the first one). (i.e. for 24” of calculated extension height collars of 13-1/2” and 12” could be used.) Follow the instructions on page 5 for assembly of multiple collars.

Use silicone sealant (not provided) to seal all joints to ensure a watertight installation.



Trapzilla® ECA-160 Extension Collar Installation Instructions



Instructions on how to bolt the two sections of the ECA Extension Collar together. Bolt placement should be located below the corresponding holes in the Trapzilla Cover.



Trapzilla® ECA-160 Extension Collar Installation Instructions

Setting the Adjusted Collar Height

- 1) Extend the collar to match the calculated height as determined on page 2.
- 2) Unscrew and remove the Cover from the Trapzilla unit.
- 3) Using the instructions found on page 5, bolt the two pieces of the Extension Collar together. Use Silicone Sealant (not provided) to seal the space between the two sections of the collar.
- 4) Mount the assembled ECA collar to the Trapzilla unit. Use five (5) bolts and washers (provided with the ECA) to mount the collar to the Trapzilla unit. Using the corresponding holes in the Trapzilla top and the collar. (Figure 2) Use Silicone Sealant (not provided) to seal the space between the collar and the Trapzilla unit.
- 5) The extension pipe and coupling assembly need to be trimmed to the same height as the adjusted collar assembly (as shown). Glue the pipe and coupling to the bottom of the pipe that is attached to the Trapzilla cover (figures 1&2).
- 6) Replace the Trapzilla cover to the extension collar and replace the screws removed in step 2 (figure 2)

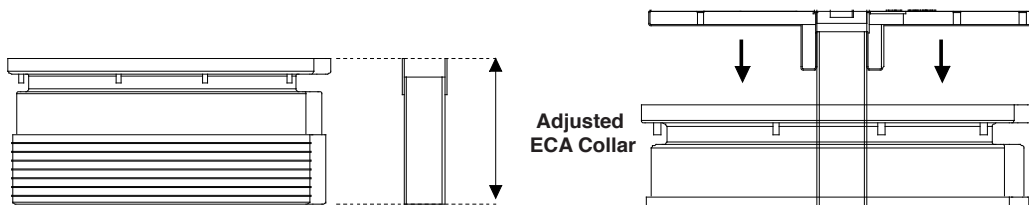


Figure 1: The Pipe Extension must be the same height as the trimmed ECA Collar

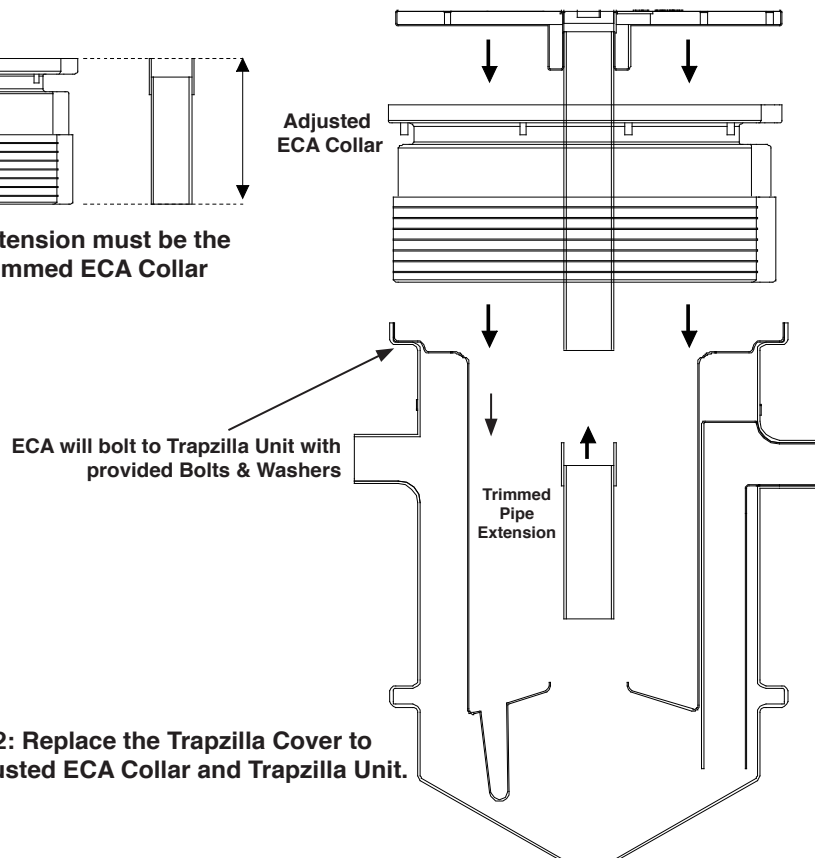
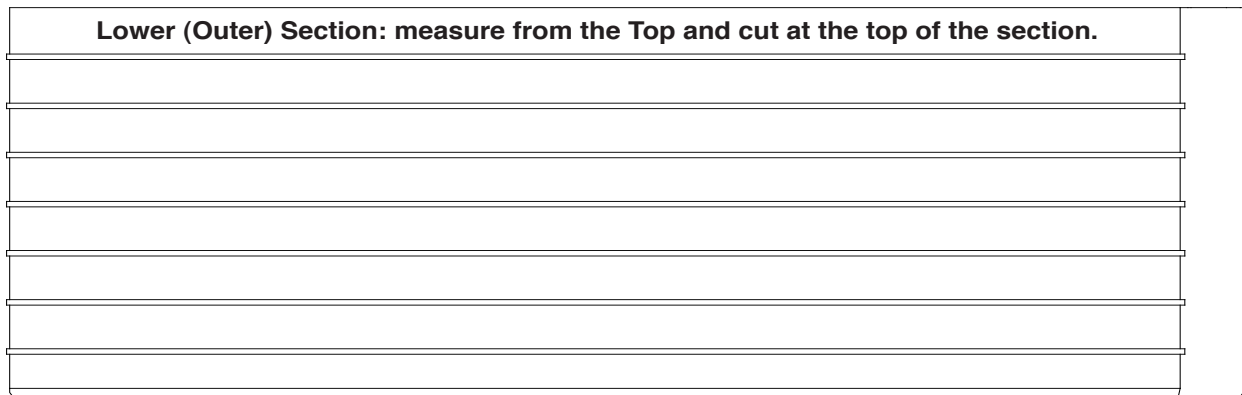
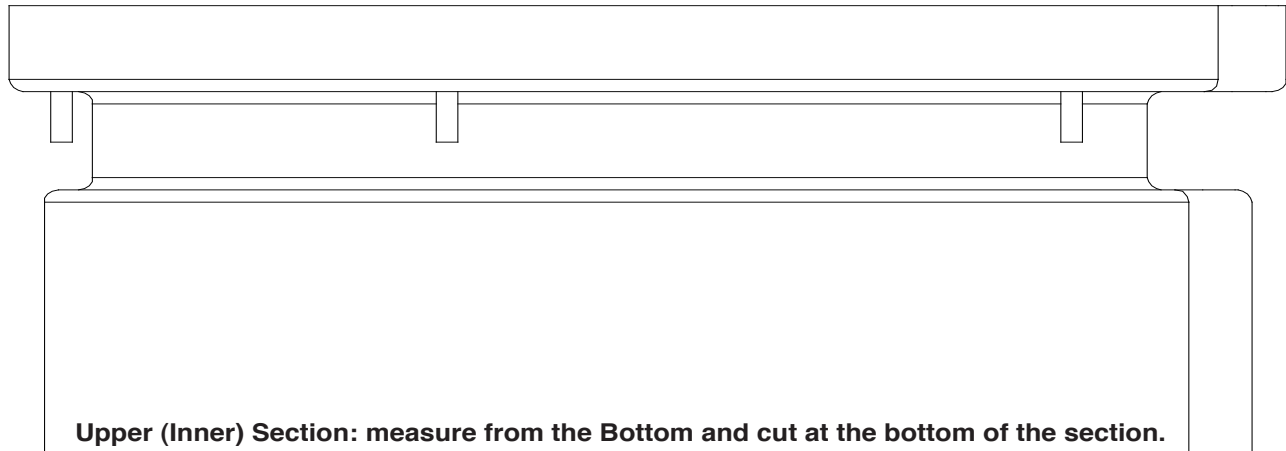


Figure 2: Replace the Trapzilla Cover to the adjusted ECA Collar and Trapzilla Unit.



Trimming the ECA Extension Collar



When trimming the ECA Extension Collar, ALWAYS:

- 1) Measure from the Top of the Lower (Outer) section & cut the top of the section.
- 2) Measure from the Bottom of the Upper (Inner) section and cut at the bottom of the section.
- 3) The amount to be trimmed from each piece is equal to 9-3/4" minus the calculated height. i.e. If the calculated height is 7", 2-3/4" should be trimmed from each half. (9-3/4"-7"=2-3/4").

